

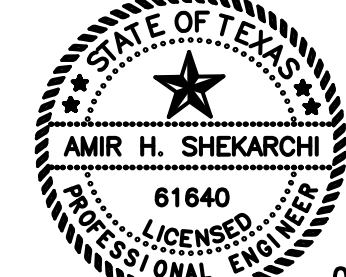
GENERAL NOTES

1. The fill material shall be granular, crushed limestone and have a plasticity index range of 7 to 15, and maximum liquid limit of forty (40). Trench excavation shall not be used as fill material.
2. Reinforcing bars shall be new billet steel meeting requirements of ASTM-615, #3 bars shall be Grade 40, #4 bars and larger shall be grade 60.
3. Reinforcing shall be detailed and placed in accordance with ACI Manual ACI-315. All bars shall be supported by beams and slabs with chairs or slab bolsters. Beam and slab reinforcement shall be continuous.
4. Concrete shall have a minimum compressive strength of 3000 psi in 28 days. Concrete mix shall not contain more than 20% fly ash.
5. Beam reinforcing shall be as shown on beam sections. Corner bars and bars at ends of interior beams shall be as shown on plan. For exterior beam depths greater than 36" provide 2 #4 bars at top and 2 #4 bars at bottom.
6. Slab reinforcing shall be as shown on the plan and 2" clear from top of slab. Extend slab reinforcing to top outside bars of perimeter beams. Start slab spacing not more than 6" from top inside beam bar.
7. All beam depth dimensions are minimum.
8. All beams excavations shall be cleaned of any loose fill prior to concrete placement. When concrete is placed, the beams shall be continuously vibrated to a depth of 12" and tamped continuously. Waterproofing shall extend across bottom of interior and exterior beams.
9. When concrete pour occurs at or above 85 degrees F, (air temperature) add a retarder to the mix, in accordance with the manufacturer's recommendations. Use pozzolith type 300-R. Backfill around perimeter to provide drainage away from foundation a minimum of 6" in 5 feet.
10. The contractor shall verify all slab dimensions before the Architect Designer and shall see architectural drawings for any shaded items before pouring concrete.

FOUNDATION PLAN

SCALE: 1/8"=1'-0"

Li H. edd.



FIRM REGISTRATION NO. F-1586

SA Engineering Company
Consulting Engineers

(210) 561-0808 FAX: (210) 561-0844
12719 Spectrum Drive, San Antonio, Texas 78249

HARRY JEWETT ASSOCIATES

130 KING WILLIAM ST., SAN ANTONIO, TEXAS

REVISIONS

JOB NO.
19FX-006
DATE 03-11-19

SHEET
S-1
OF
1